



Wellington
SCHOOL

LEARNING FOR LIFE

Nisi Dominus Frustra

‘Apart from God,
our labour is in vain.’







Headmaster's Welcome

At Wellington we want every pupil to feel known, valued and understood. We believe that children who are secure in themselves will be able to confidently express who they really are and will rise to the challenge of becoming all they can be.

A strong sense of community defines the Wellington way and honesty, integrity, kindness, tolerance and inclusivity are some of the values we hold dear. We care for and support girls and boys as they become young adults, and we do all we can to ensure they leave school equipped to thrive in an increasingly complex world.

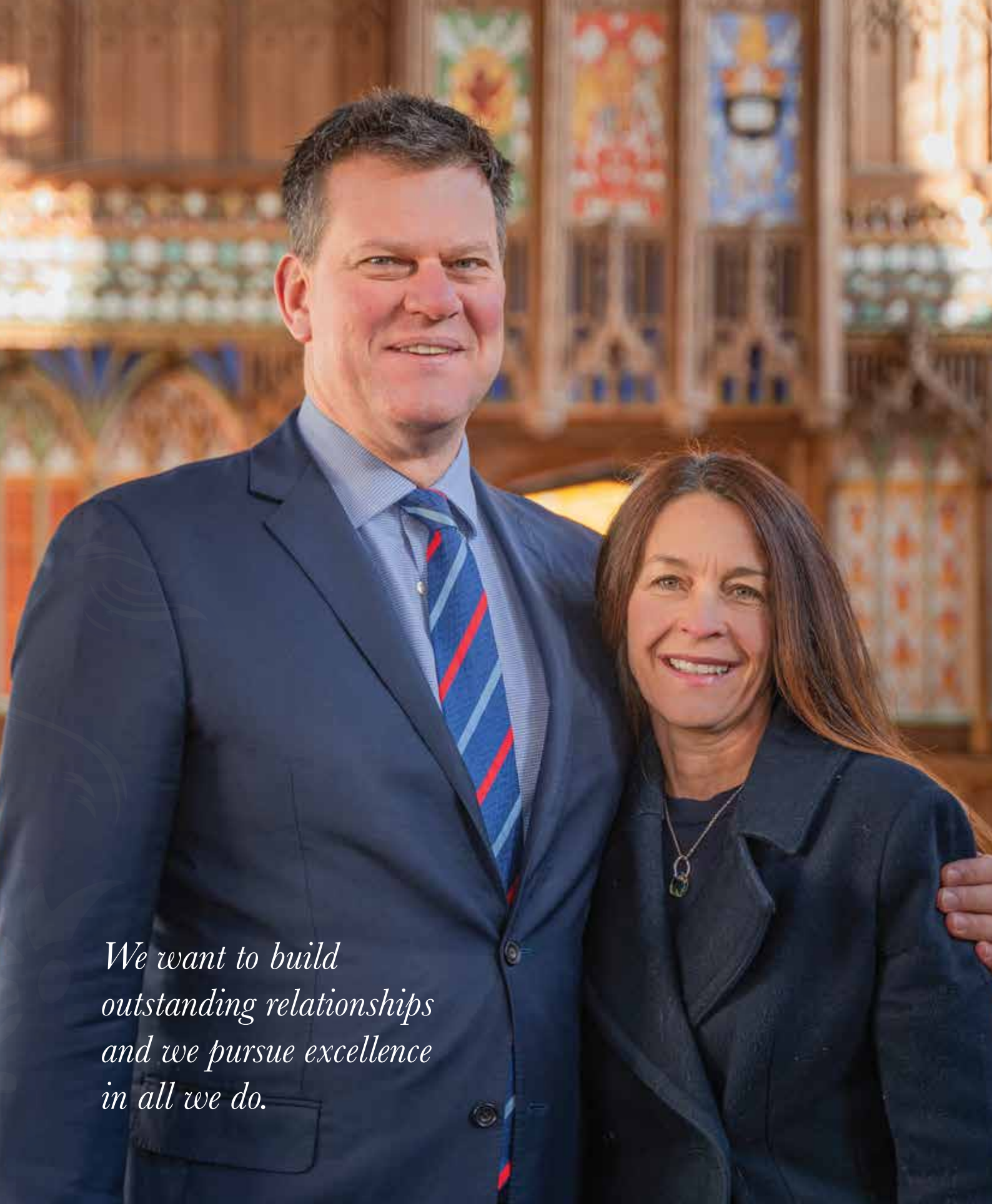
Learning, in its many forms, is at the heart of all we do. We have high expectations of our girls and boys and our dedicated teachers support their pupils in achieving to the very best of their ability. Academic outcomes, as important as they are, are only one element of the learning journey and we want young men and women leaving Wellington able to think critically and work collaboratively in finding creative solutions to complex problems.

We pride ourselves on offering an outstanding all-round education and we are wholly committed to educating the whole person. Be it drama, music, sport, outdoor excursions or societies, our remarkable co-curricular programme provides every boy and girl with the opportunity to enjoy and, if they wish, to excel in an activity of their choice.

Working hard in the classroom, contributing to the life of the School and serving our wider community ensures that pupils at Wellington develop in mind, body and spirit. We are a progressive, forward-thinking school and it would be a pleasure to help you find out more about all we stand for and do.

Eugene du Toit

Eugene du Toit

A man and a woman are standing together in front of a church. The man, on the left, is wearing a dark blue suit, a light blue shirt, and a blue and red striped tie. The woman, on the right, is wearing a dark blue coat over a dark top and a necklace with a circular pendant. They are both smiling. The background features ornate wooden church architecture and several colorful stained glass windows.

*We want to build
outstanding relationships
and we pursue excellence
in all we do.*

Our School

Wellington School was founded in 1837 as Wellington Academy and gained a sound reputation as one of England's leading Public Schools. Direct Grant Status in 1945 enabled Wellington to respond to local demands for a grammar school education and the School became fully independent in 1977. Girls were admitted in 1978 and today the School responds to the challenges of the 21st Century by taking the best of the traditional and the modern to create a warm, friendly and stimulating

environment for pupils to thrive, learn and flourish. Set in a small market town in the rolling Somerset hills, Wellington School is part of the local community and provides a safe, nurturing environment for our pupils without confining them. With 35 acres of grounds to explore and easy access to countryside and beaches, pupils have the space and opportunity to spread their wings.



“Wow, wow, wow + what an absolutely amazing start to our son’s Wellington journey”

Parent



The School has never lost sight of its reputation for providing a high quality, academically rigorous education. We pursue excellence but do so without being extravagant. The friendly and open nature of our students reflect our down to earth approach to schooling.



Formal

A Wellington School education provides pupils with the tools to go into the world and flourish. They can converse, articulate, debate and charm. They know how to behave in many tricky adult situations because they have had guidance, mentoring and practical applications. They can stand to attention on CCF parade or sing Verdi's Requiem in robes in the exquisite Chapel. They go into the community and fulfil valuable roles; they go on to excellent universities and diverse and rewarding careers...

- ▶ Outstanding pastoral care
- ▶ Strong tradition of academic excellence
- ▶ Broad co-curricular programme
- ▶ Successful admissions to top universities
- ▶ Superb facilities and staff

(see further information booklet for current results)





“The support system within the school has encouraged me to reach for the stars, and achieve them!”

Student

Informal

...but they also know how to have fun! How to plan a Ball, how to play jazz, how to fly a drone, how to record a song, how to build a buggy, how to relax in the company of their friends and, crucially, how to enjoy life. Most of all, they know the value of being themselves and believing that they can achieve whatever they set out to do.

Wellington produces well-rounded, confident, polite young men and women who are able to contribute meaningfully to whichever community they choose to serve.

In the Classroom...

We seek to instil in our pupils a love of learning and a desire to engage actively with the world around them. Our teachers aim to inspire our pupils and support them in fulfilling their academic potential, whilst our curriculum is designed to ensure that all our pupils are able to flourish intellectually and academically.

In Years 7, 8 and 9 pupils follow a broad curriculum which allows them to develop their knowledge, skills and understanding across a range of subject areas before making their GCSE subject choices in Year 9.

GCSE:

The GCSE curriculum is carefully designed to ensure that all pupils complete courses in the core subjects of Mathematics, English and the Sciences whilst also allowing for a degree of specialisation. Pupils are able to pick from a wide range of courses, allowing them to tailor the curriculum to their own interests.

GCSE subjects currently available are Art and Design, Biology, Business, Chemistry, Classical Civilisation, Computer Science, Design and Technology, Drama, English Language, English Literature, French, Geography, German, History, Latin, Mathematics, Music, Physics, Physical Education, Religious Studies and Spanish.

In addition all pupils follow unexamined courses in Sport and Wellbeing, and in PSHEE.



A Level:

We offer an exciting and diverse range of A Level subjects. Results are consistently excellent, enabling our students to take up places on a wide variety of courses at leading universities, including Oxford and Cambridge.

A Level subjects currently available are Art and Design, Biology, Business Studies, Chemistry, Classical Civilisation, Computer Science, Design and Technology, Drama and Theatre Studies, Economics, English Literature, French, Geography, German, History, Latin, Mathematics and Further Mathematics, Music, Music Technology, Physics, Psychology, Religious Studies, and Spanish.

Furthermore, we offer a BTEC Level 3 National Diploma in Sport, which is equivalent to 2 A Levels and can be taken alongside one A Level course.

Students also follow an extensive programme of academic enrichment. This is carefully designed to develop their study and research skills, to nurture their ability in critical thinking, and to encourage them to engage with a range of contemporary global issues. There is also the opportunity to undertake an Extended Project Qualification, which allows students to undertake an in-depth study of a topic of their own choice, and is highly regarded by universities.

“The quality of the curriculum is excellent. Pupils have a wide choice of subjects at GCSE and particularly appreciate the range of 24 A Level options.”

The Good Schools Guide



- Performance is carefully monitored ensuring that pupils make excellent progress which is reflected in consistently high examination results.
- Experienced staff are always available to advise and support students in their academic studies.



And beyond...

Outdoor Education

We emphasise the teaching of life skills, reinforced by outdoor expeditions where we take pupils out of their comfort zones.

Our Outdoor Education Department offers all our students full access to the Bronze, Silver and Gold Duke of Edinburgh Award schemes and the Ten Tors Challenge, as well as running a series of expeditions and experiences for all students in Years 7 – 9 and additionally for students in Years 10 – 13 with an interest in outdoor challenge.

Climbing, canoeing, mountain biking, caving and sailing are all on offer, as well as trips involving walking, camping and cooking. Pupils from Year 10 are able to join the CCF in the Army, Navy and Air Force sections, which offer opportunities for pupils to develop leadership skills, self-reliance and to learn team-building and responsibility in a challenging environment. All have hands-on practical experience in their sections, including flying helicopters, shooting on ranges, extensive boating and expeditions. Over 200 students each year enjoy the challenges of the CCF as cadets or non-commissioned officers.



The curriculum is supported by an excellent range of co-curricular activities.



Activities and Expeditions

In addition to the many outdoor expeditions and activities on offer, individual departments run a wide variety of educational trips to augment classroom experiences.

These have included Geography expeditions to Chamonix, language exchange trips to Madrid and Berlin, sporting tours to Dubai, Barbados, the Netherlands and Europe, a Classics trip to Rome, Florence and Tuscany and marine biology / rainforest exploration in Dominica.

Trekking expeditions have taken the pupils to the Atlas Mountains in Morocco, Annapurna Base Camp in Nepal, an unsupported trek across Greenland and an expedition to Iceland, winter mountaineering in Scotland and summer mountaineering in the Dolomites.

These trips take pupils to some of the most beautiful and remote places on the planet, places that have not been spoilt by tourism, where pupils can stretch themselves physically and immerse themselves in the culture of the local communities.



Pastoral Care

The School's positive atmosphere is created by the commitment and kindness of every member of the community.

The happiness and well-being of our pupils is of paramount importance. The experience of being part of Wellington School plays a major part in developing life skills and, through school, pupils learn tolerance, respect and the importance of support and encouragement. Day pupils and boarders come together to form the School's rich and diverse community, supported by a sensitive pastoral system which includes Teachers, House Tutors, Heads of House, Heads of Section, Heads of Year and House Parents.

- ▶ A vibrant community for all of our boarding and day pupils
- ▶ Identification and nurture of the potential in every child
- ▶ Fostering of mutual support, friendship and participation
- ▶ Exceptional pupil leadership opportunities
- ▶ Commitment to the development of every child

Moral & Spiritual

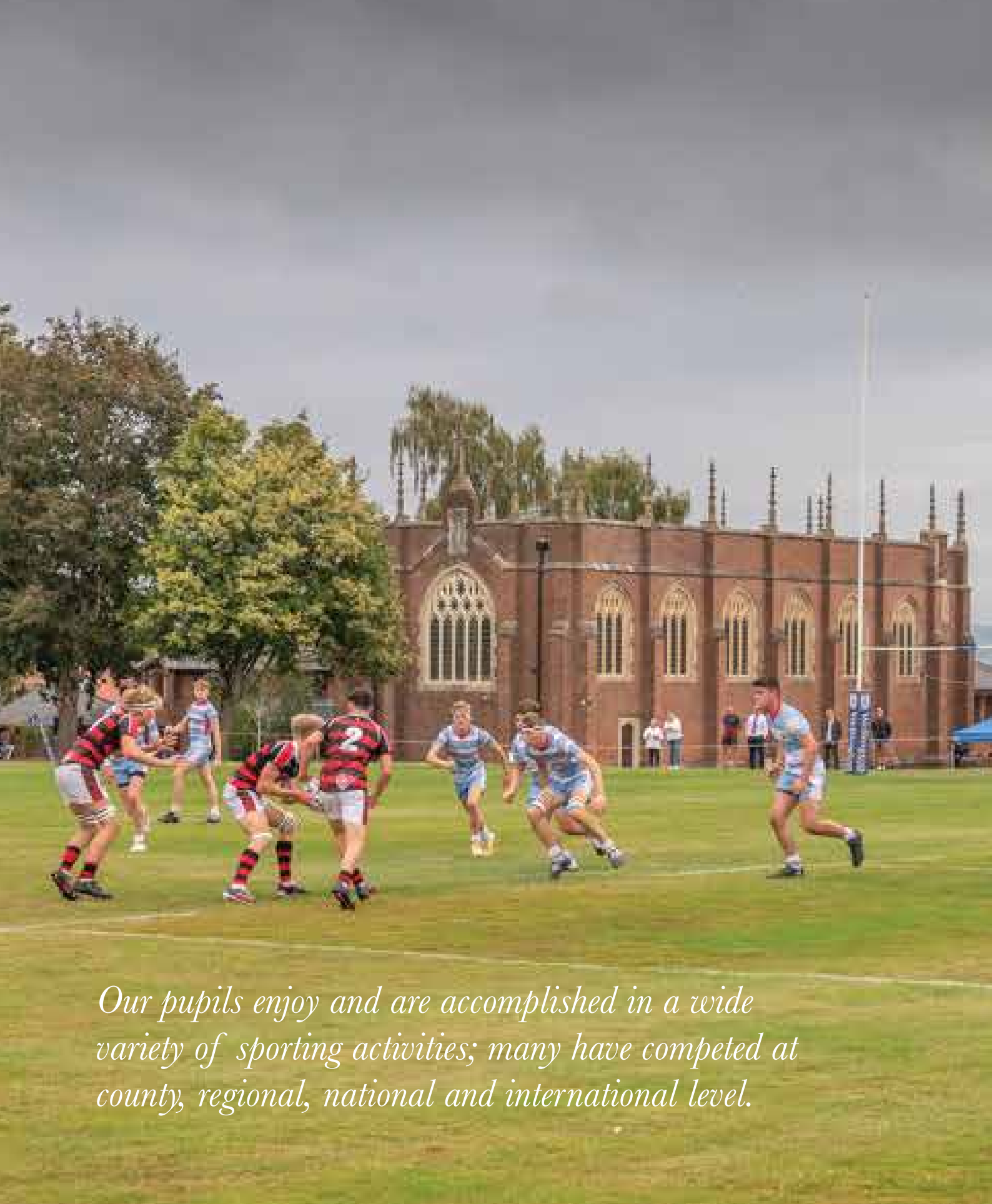
In contrast to the vigorous pace outside, the Chapel offers students a haven of tranquility. At the very heart of the School, the beautiful Memorial Chapel is used daily for assemblies, concerts and services. We aim to instil a strong and enduring sense of values in all our pupils regardless of denomination and to encourage them to discover for themselves a sense of purpose.



A woman with brown hair tied back, wearing a blue blazer over a teal floral dress, is leaning over a white table. She is smiling and looking towards a young boy in the foreground. On the table are several colorful sticky notes (pink, yellow, green) and a red pen. The background is a plain white wall.

*“A happy school with polite,
grounded pupils who are
confident and independent”*

Parent



Our pupils enjoy and are accomplished in a wide variety of sporting activities; many have competed at county, regional, national and international level.

We see no conflict between excellence and inclusivity. Whether representing their country or playing for fun, we believe in developing every pupil's talents and abilities.



Sport

A pioneering Sports Performance and Wellbeing Department delivers a whole new approach to fitness and sport. In addition to sports coaching for all pupils, a new wellbeing element educates our young people on important lifestyle features such as diet, fitness and body image.

All students embark on a broad physical experience, with opportunities in the target sports of rugby, hockey, netball, athletics and cricket supplemented by subsidiary options including football, cross country, modern pentathlon and basketball.

- ▶ Extensive fixtures programme at all age groups
- ▶ Olympic standard sports complex with specialist fencing salle
- ▶ Proven development programme from age 3-18
- ▶ Unique Talented Athlete Pathway
- ▶ Outstanding coaches
- ▶ Developing character through competition

A wide range of other sports are also available including basketball, badminton, gymnastics, fencing, table tennis, circuit training, fitness, squash, yoga and pilates. Tennis and swimming will be year round opportunities and elements of sports psychology and sports analysis are also available.

Autumn Term

Boys' Rugby | Girls' Hockey | Boys' Indoor Hockey

Spring Term

Boys' Hockey | Football | Rugby Sevens | Girls' Netball
Girls' Indoor Hockey | Cross Country | Girl's Rugby | Girl's Football

Summer Term

Boys' and Girls' Cricket | Athletics | Swimming | Tennis for all



Music

We believe passionately in fostering a love of music and performance in all pupils. Opportunities to perform are frequent, with over 50 concerts and musical events scheduled each year, reflecting both excellence and diversity – the standard of music-making is consistently impressive. We extend the talented pupils and enable every pupil to participate in the musical life of the School.

Over a third of the pupils have instrumental tuition in the School and are taught individually by our team of over 20 specialist instrumental staff.

Our Music 3-18 programme spans the Prep and Senior Schools and encourages performance and participation from all pupils.



“Music in School? Love it!”
Student



“Masses of encouragement for all types of music.”
The Good Schools Guide

- ▶ An extensive range of ensembles covering all instruments and genres of music
- ▶ Many varied vocal ensembles including the acclaimed Chapel Choir
- ▶ An extensive range of Bosendorfer and Yamaha pianos are situated in all practice and performance spaces.
- ▶ Inspirational Music School spanning the Senior and Prep Schools
- ▶ Impressive iMac suite and recording studio
- ▶ Considerable success in regional and national competitions and festivals
- ▶ Links with professional alumni
- ▶ Nationally renowned teachers



We want our pupils to be confident and ambitious, but wholly devoid of arrogance or any sense of entitlement.





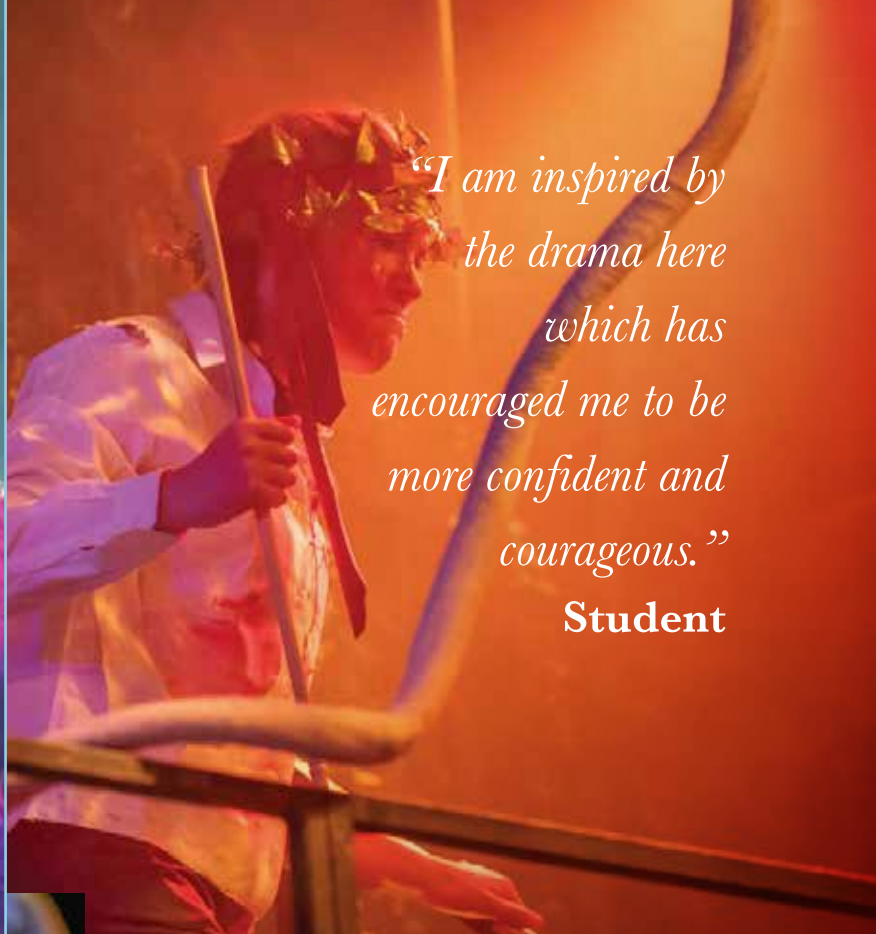
Performing Arts

There is a huge variety of opportunities for all students to become involved in all aspects of performing arts. Productions range from toe-tapping musicals such as *Bugsy Malone*, *Les Miserables*, *Our House* and *School of Rock*, to serious productions such as *Macbeth*, *Lord of the Flies*, *The (less serious) Importance of Being Earnest*, *Blood Brothers*, ground-breaking *Sweeney Todd*, some improvised performances, farces and contemporary plays.

Behind the scenes, stage make-up and costume are vital ingredients of all productions and our Tech Club offers the chance to learn lighting, sound and stage management.



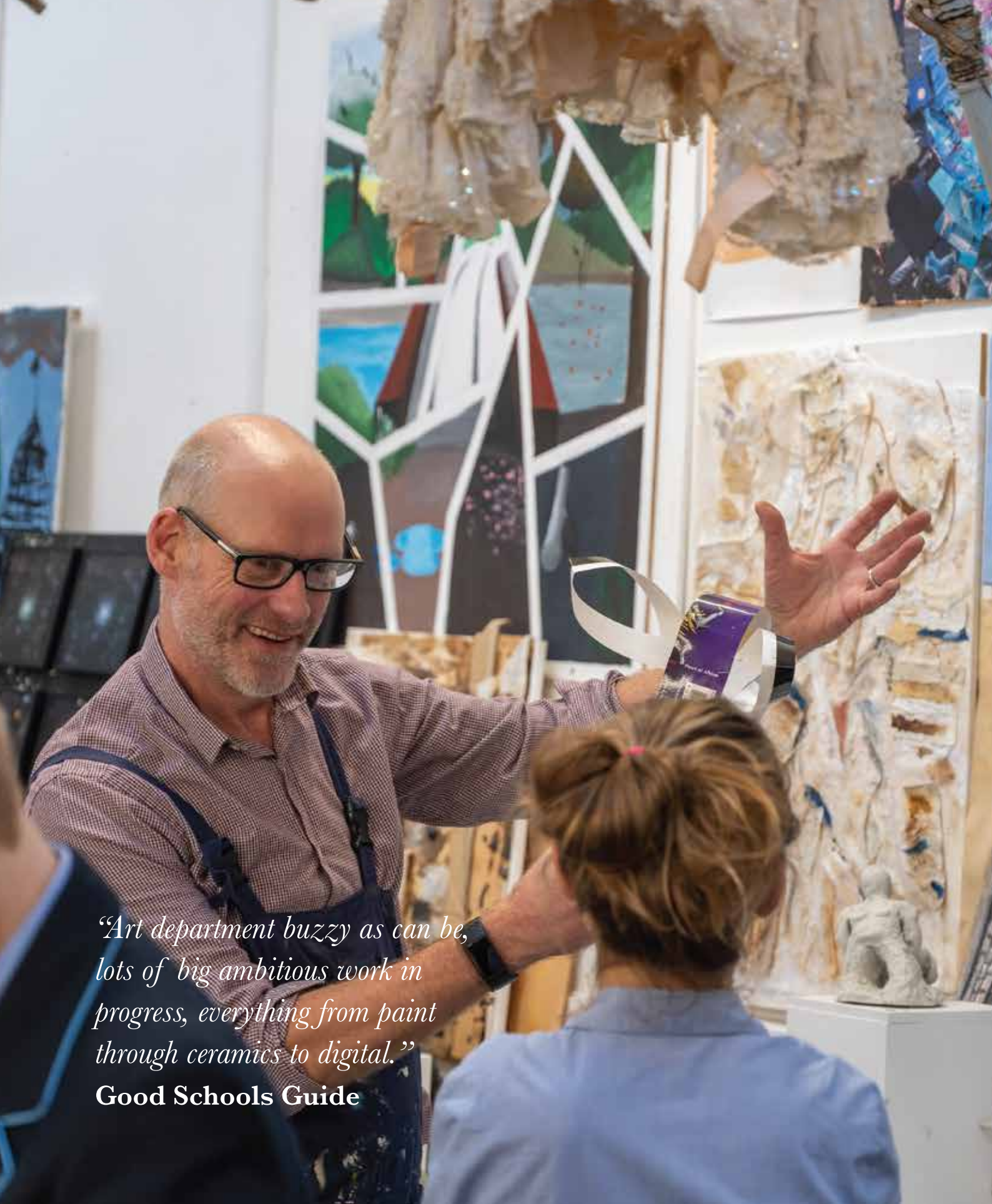
- ▶ Opportunity to take part in dance and physical theatre classes
- ▶ Great Hall seats 250 as a flexible auditorium
- ▶ Alternative studio space with 80 seats, opened by former pupil David Suchet
- ▶ Outstanding drama productions and projects
- ▶ Significant success in festivals and competitions
- ▶ LAMDA training offered
- ▶ Extensive outreach programme, working with professional theatre companies such as The Old Vic
- ▶ Residential visits to London to train with West End practitioners



*"I am inspired by
the drama here
which has
encouraged me to be
more confident and
courageous."*

Student





*“Art department buzzy as can be,
lots of big ambitious work in
progress, everything from paint
through ceramics to digital.”*

Good Schools Guide

Art & Design Technology

Imagination is allowed a free rein within the Art Department. Pupils are challenged to paint, sculpt and work with ceramics, photography, textiles, print or any other media they choose. Alongside traditional skills, all pupils are given every encouragement and opportunity to explore and discover their creative potential and practical abilities.

State of the art equipment in Design and Technology allows pupils to investigate and experiment with a range of materials including wood, plastics, metals and electrics. From a 3D printer or a laser cutter to a traditional furnace and anvil, the scope to develop skills and hone them to professional levels is available. We encourage our pupils to be individual, independent - minded and courageous in their creativity, and the outstanding range of work they produce is a testament to that philosophy.

“Some of the best school art around.”

The Good Schools Guide

Boarding

Boarders are an integral part of life at Wellington School, coming from all across the UK and overseas.

The beautiful grounds, comfortable buildings and friendly staff create a home from home. Each boarding house is run by resident House Parents, ably assisted by a resident tutor and a matron to ensure there is always someone to turn to.

A wide and diverse range of weekend activities is arranged for the boarding pupils by members of staff.

The boarding community enhances the culture of the School and friendships are forged for life.

We offer weekly and full boarding, with some flexi boarding to suit family needs. The House staff reinforce traditional family values of trust, informality and mutual respect.

International

Our boarders come from Europe, the Far East, Africa, America and beyond and add a rich and exciting dimension. There are over 30 different nationalities represented in the School and we celebrate all cultures.

Their presence ensures a strong social and cultural mix which adds vibrancy and encourages lifelong friendships across all boundaries.



We welcome girls and boys from a wide range of socioeconomic backgrounds and values such as kindness, inclusivity and tolerance inform our ethos.



Structure

Lower School - Year 7 and 8

- ▶ Dedicated Head of Section, Head of Year 7 and Year 8
- ▶ A wealth of pastoral support; tutor groups of 5-6 will meet daily with their tutor
- ▶ Mixed houseroom encourages interaction and friendship
- ▶ A huge raft of lunch time and after school activities
- ▶ Society Secretaries

Upper School - Year 9, 10 and 11

- ▶ The Head of Upper School is responsible for the overall welfare of these pupils
- ▶ Close contact with House Staff and Tutors
- ▶ Dedicated Heads of Year 9,10 and 11
- ▶ Small tutor groups which ensure students are individually supported through the process of choosing GCSE subjects.
- ▶ A focus on developing independent learning and study skills in preparation for GCSE courses.

Sixth Form

- ▶ Lower Sixth and Upper Sixth
- ▶ Head of Sixth Form and dedicated Head of Lower Sixth
- ▶ Sixth Form Tutor Team

“My child thanks me every day for sending her to Wellington - she says it is the perfect school (high praise indeed from a moody teenager!!)”

Parent





House Structure

- ▶ Six houses run throughout the School from Year 7 to the Sixth Form.
- ▶ Fully co-educational - and made up of both day students and boarders
- ▶ Older students mentor the younger ones and welcome them into the School and their House.
- ▶ Various competitions take place throughout the school year which involve the whole House or a select group. Not all House activities are 'sport' based and all House members will get involved in fund-raising and other engaging group activities.
- ▶ Tutors play a crucial role in overseeing pastoral care and academic progress - all students have regular sessions with tutors and houses each week.

“Friendly, purposeful and busy, it is a solid well-managed school, giving its pupils a sound education and masses of high points in developmental experience. Its flexible and approachable style means happy pupils and happy parents.”

The Good Schools Guide

We want our pupils to be independent, intellectually curious, creative problem-solvers who can communicate effectively and work with others to address challenging problems.



Sixth Form pupils follow a rigorous programme of preparation for applying to university and we support our pupils in securing valuable work experience.

Sixth Form & Beyond

With a dedicated Sixth Form Centre and specific roles to fulfil within the School, the Sixth Form is an exciting place to be.

It is an essential preparation and transition between school and university or the world of work. Pupils depart having learned to be self-motivated and to respect others and with a clear desire to fulfil their individual potential.

Our Sixth Formers demonstrate consistently excellent performance in public examinations. Eventual destinations include the best universities in the UK, Europe and the USA.

Synergistic working relationships between staff and students are a particular feature of Sixth Form life.

Opportunities for leadership

The list below gives some indication of the huge range of activities and positions which provide our pupils with the opportunity to develop the leadership skills:

- ▶ Student Councils
- ▶ School Captains and House Captains
- ▶ Co-curricular leadership positions
- ▶ CCF and Duke of Edinburgh
- ▶ Student Mentors
- ▶ Society Secretaries
- ▶ Charities and fund-raising opportunities
- ▶ International Committee

Careers Advice & Guidance

A dedicated department provides information, advice and guidance to pupils to help them further their career interests and identify the choices (academic and experience) that they will need to make in order to realise their career aspirations.

Our alumni are very involved in providing advice, work experience opportunities, guidance and hands-on support to pupils in considering possible career options.

A team of tutors supports students through the University entry process, which includes completing application forms, interview techniques and CV writing.



“The whole Sixth Form experience is a privilege. There is a mutual respect between pupils and teachers with a focus on our work that makes learning more inspiring” **Sixth Form Student**



And then...

Old Wellingtonians' Association

There is a vibrant Old Wellingtonians' Association offering many opportunities for meeting socially and keeping in touch. It is an indication of the loyalty and affection which so many past pupils feel for their school that many retain strong links with the School, coming back to give help and advice to our current students. Numerous OWs also send their children to the School to allow them to enjoy the rich and diverse education which they enjoyed. Many members of our staff are also Old Wellingtonians, underlining the sense of warmth which the School engenders in so many who are associated with it.

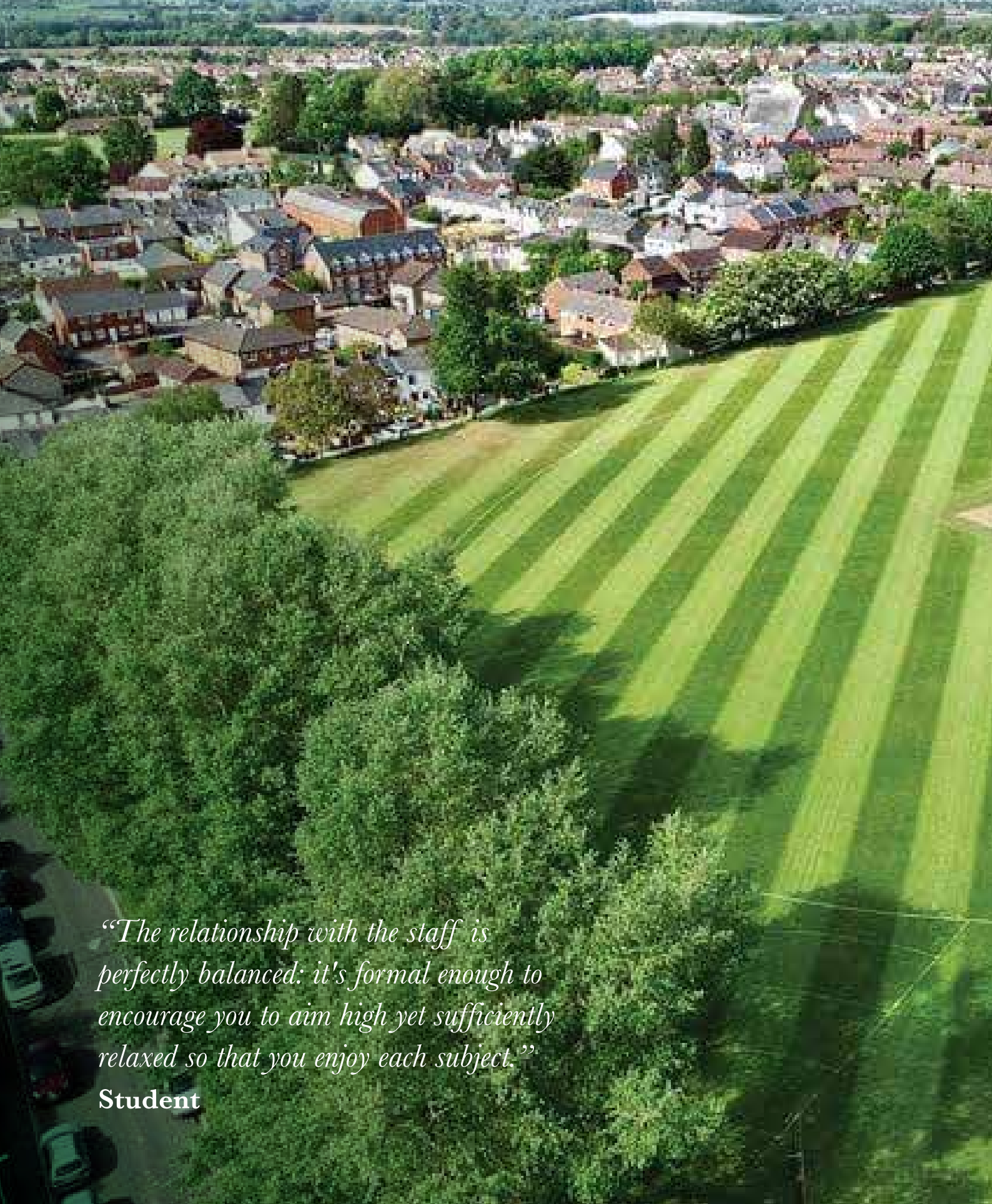
Wellington School Foundation

The Wellington School Foundation exists to support the development of Wellington School. The Foundation relies totally on the generosity of past pupils and friends of the School. It is governed by Trustees who work closely with the School and the Governors to offer help for both bursaries and capital projects.

Since its inception, the Foundation has become synonymous with the wider "Wellington School Family", acting as an umbrella body for the Old Wellingtonians, the Friends of Wellington School and the Friends of Wellington Prep School.

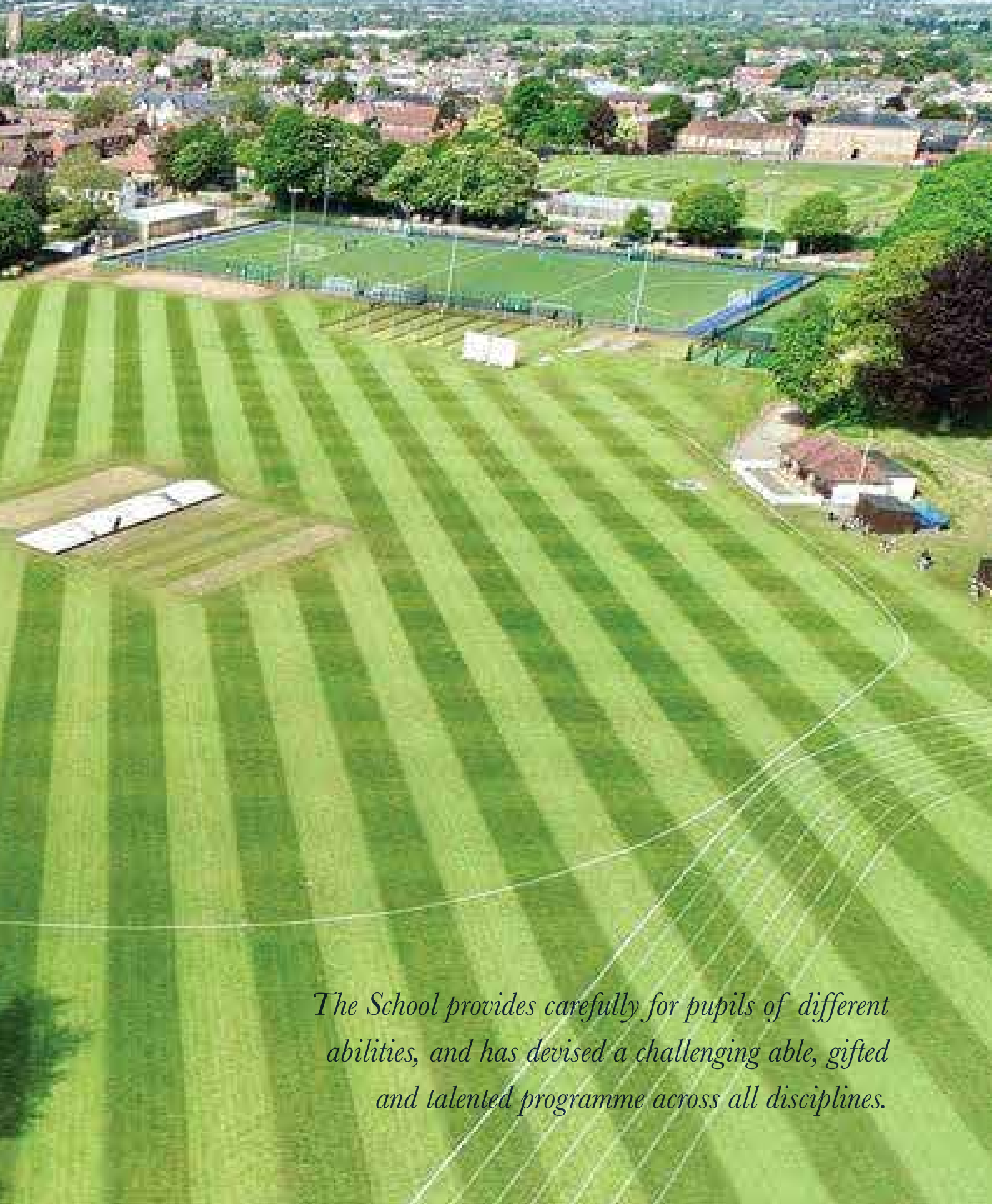
Friends of Wellington School

Every parent or guardian of a current or past pupil of Wellington School is a Friend of the School. The Friends run regular events to bring parents together and through that raise money for every aspect of school life. Wellington is known for being a friendly school and for making children welcome. The Friends aim to do the same for parents by running supper nights, quiz evenings, Christmas and summer fairs, Burns Night, ladies' indulgence evenings, racing nights, murder mystery evenings, car boot sales, dances... the list is endless.

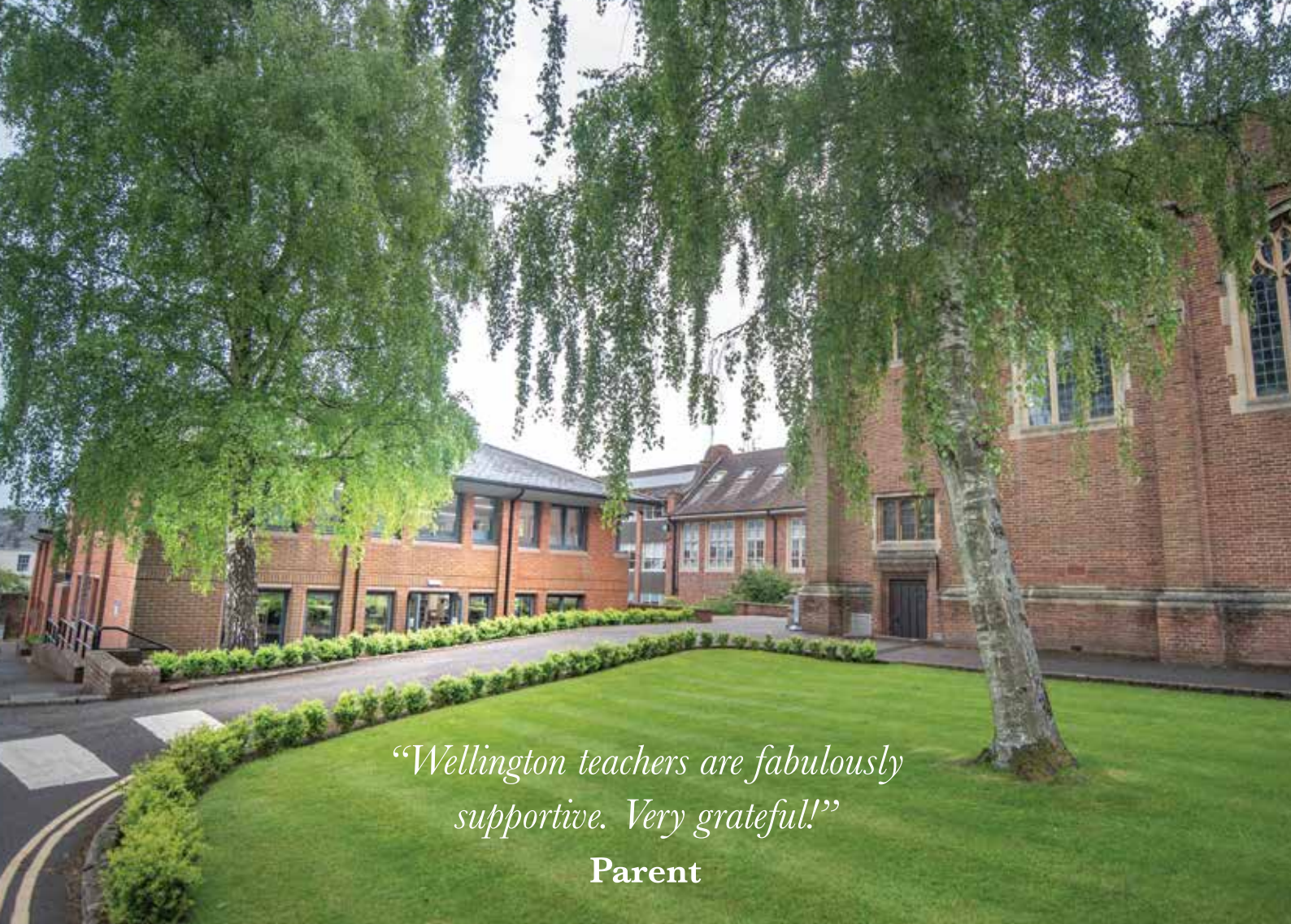


“The relationship with the staff is perfectly balanced: it's formal enough to encourage you to aim high yet sufficiently relaxed so that you enjoy each subject.”

Student



The School provides carefully for pupils of different abilities, and has devised a challenging able, gifted and talented programme across all disciplines.



*“Wellington teachers are fabulously
supportive. Very grateful!”*

Parent



*Wellington Prep School nurtures pupils from 3 – 11 and
prepares them for life in Wellington Senior School and
beyond. We pride ourselves on a rounded education up to
18, so please look at the whole package.*



Wellington School
South Street, Wellington, Somerset, TA21 8NT

01823 668800
admissions@wellington-school.org.uk
www.wellington-school.org.uk

